



NOTICE

GS 10B of 1995

MARKET ACT

[20th December 1995]

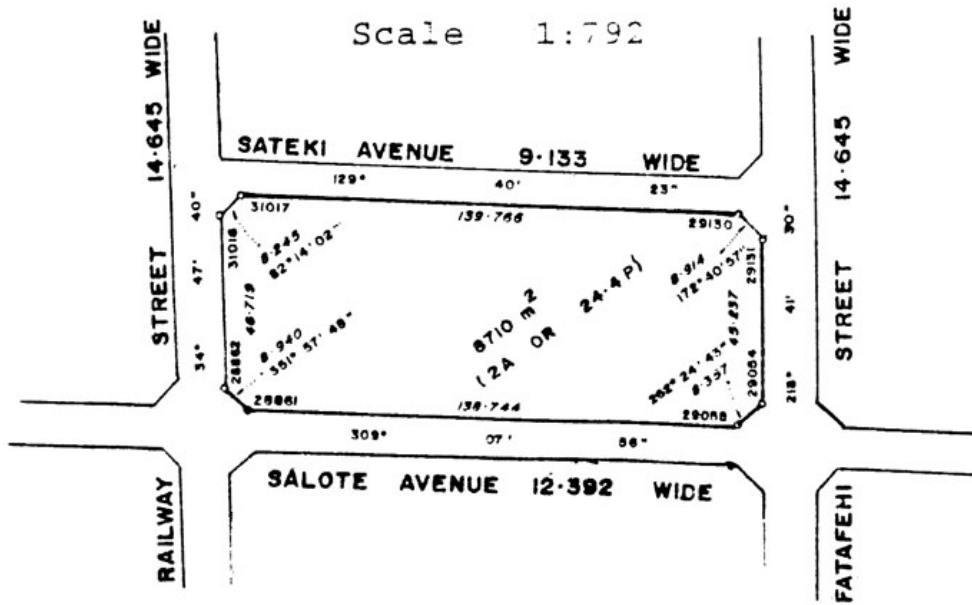
TALAMAHU MARKET

IN EXERCISE of the powers conferred by section 3 of the Markets Act (Cap. 49) the Minister of Agriculture and Forests hereby establishes the TALAMAHU MARKET and specifies its area and boundaries as described and shown below:

Containing an area of 2A. OR. 24.4P (8710m) more or less situated at Kolofo'ou being Lot 1 & 2 on Survey Office Plan 80/93-P2, bounded by SATEKI ROAD from the North, FATAFEHI ROAD from the East SALOTE ROAD from the South, and RAILWAY ROAD from the West.

Commencing on boundary pillar 28862, thence run consecutive]y on the following bearings and distances, 34 47' 40" - 46.719 metres to BP. 31018, 82 14' 02" - 8.245 metres to BP 31017, 129 40' 23" - 139.766 metres to BP 29130, 172 40' 57" - 8.914 metres to BP 29131, 215 41' 30" - 45.237 metres to BP 29054, 262 24' 43" - 8.357 metres to BP 29055, 309 07' 56" - 138.744 metres to BP 28861, 351 57' 48" - 8.940 metres to the point of commencement.

All measurements are in metres



Made at Nuku'alofa this 14 day of December 1995.

Vaea
Minister of Agriculture and Forests